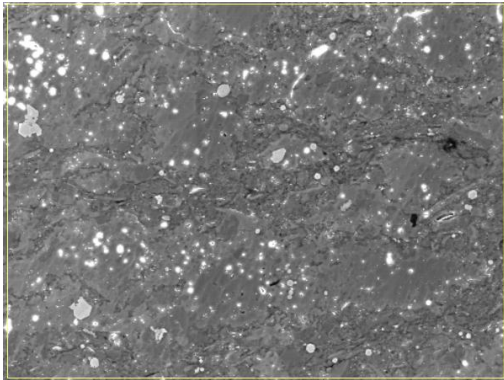
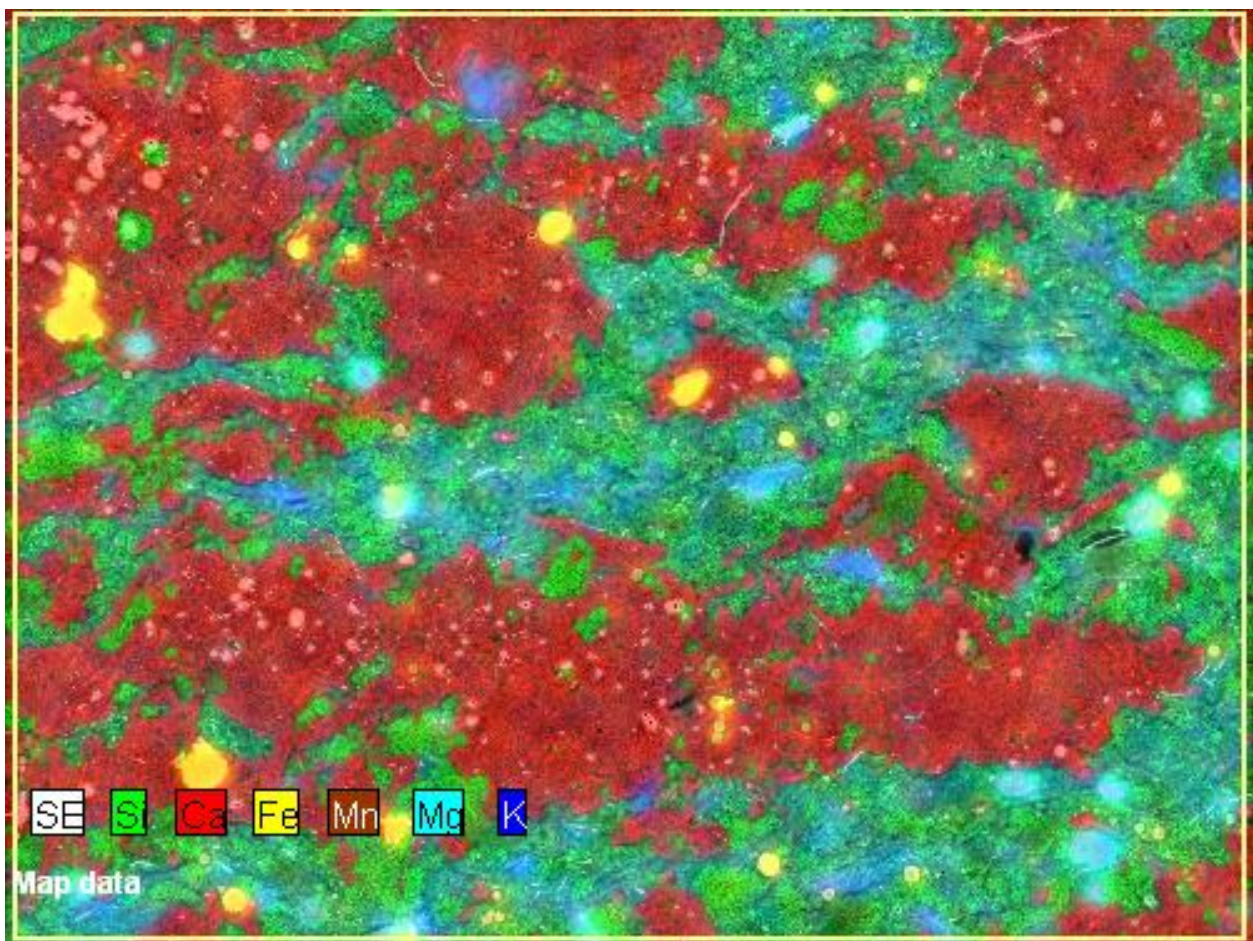


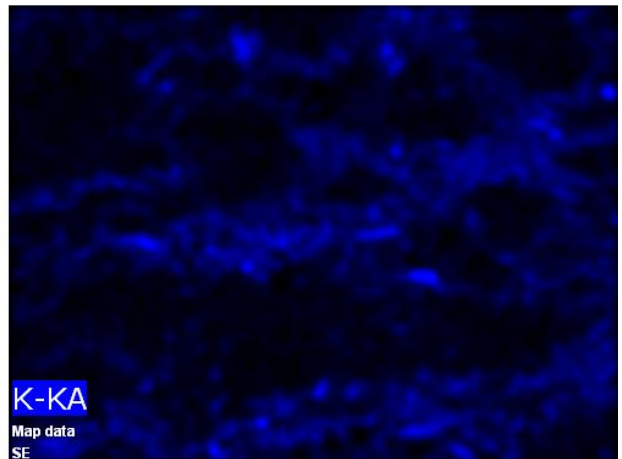
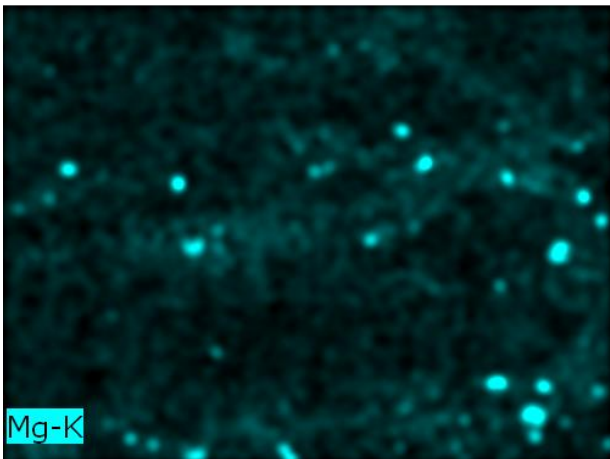
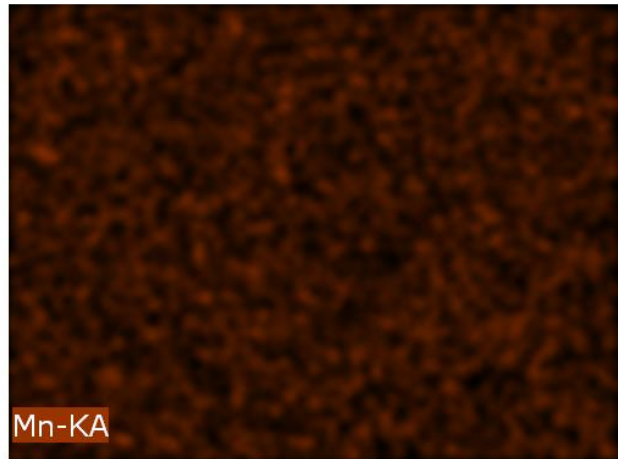
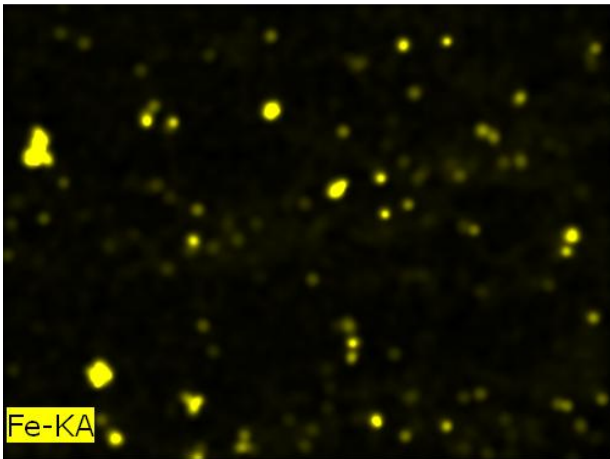
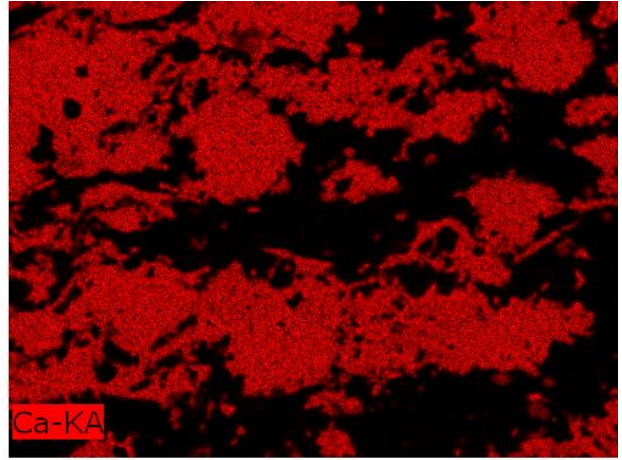
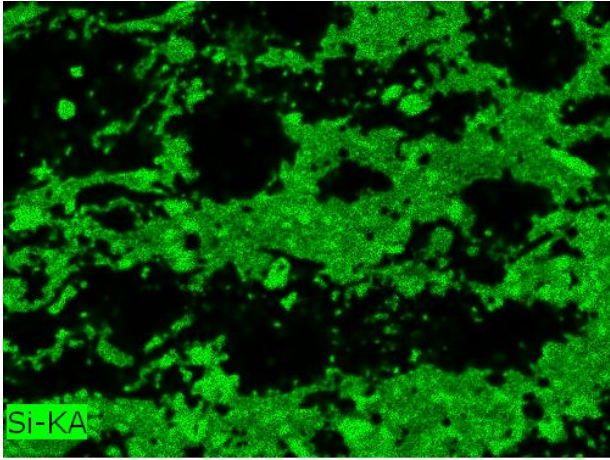
Energy-Dispersive X-ray Spectrometry (EDS) Large Area Elemental Mapping



SAMPLE A size:500 x 375

Map SAMPLE A size:500 x 375



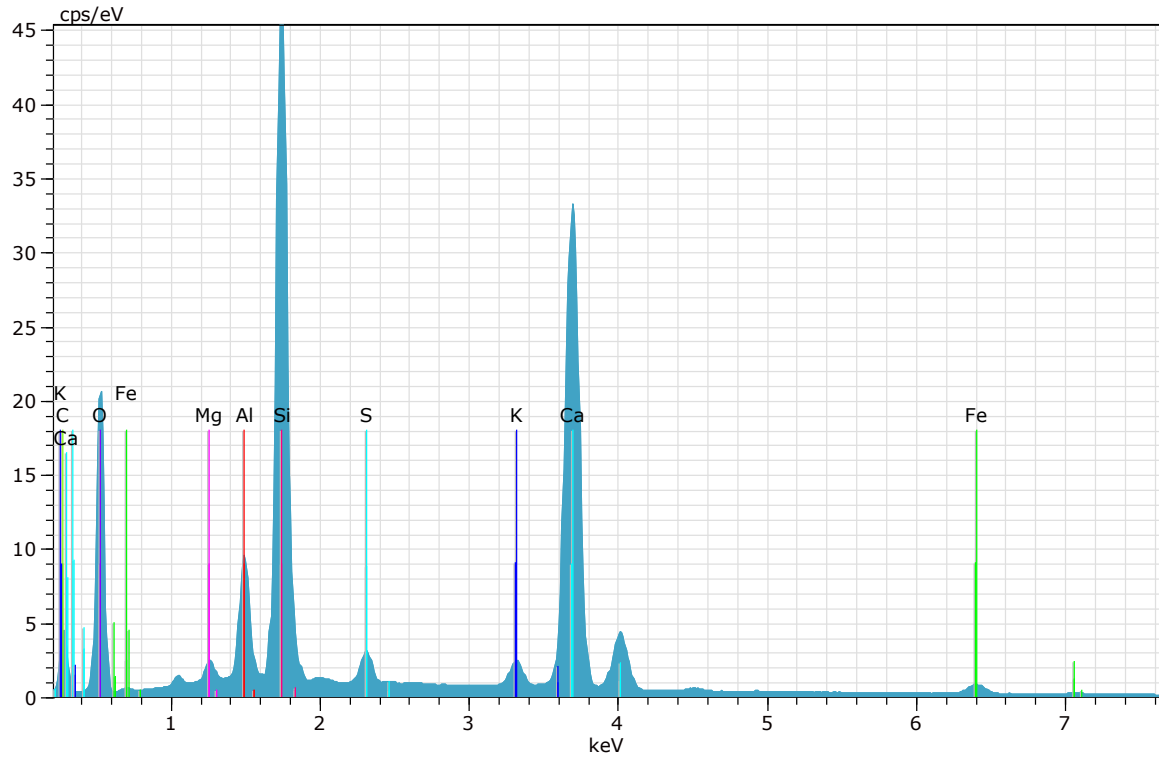


Si-KA, Ca-KA, Fe-KA, Mn-KA, Mg-K, K-KA

SAMPLE A

size:500 x 375

Energy-Dispersive X-ray Spectrometry (EDS) Quantitative Analysis



Spectrum: 1

El	AN	Series	unn. C [wt.%]	norm. C [wt.%]	Atom. C [at.%]	Error (1 Sigma) [wt.%]
O	8	K-series	41.19	43.82	54.64	4.42
Ca	20	K-series	22.32	23.74	11.82	0.68
Si	14	K-series	13.27	14.12	10.03	0.59
C	6	K-series	10.90	11.60	19.27	1.29
Al	13	K-series	2.92	3.11	2.30	0.16
Fe	26	K-series	1.20	1.28	0.46	0.06
K	19	K-series	0.79	0.84	0.43	0.05
S	16	K-series	0.79	0.84	0.52	0.05
Mg	12	K-series	0.61	0.65	0.53	0.06
Total:			94.00	100.00	100.00	